

ADDENDUM NO. 1

Dated: March 3, 2021

Plans and Specifications for: **Spruce Street from 4th Street to 6th Street – Street & Utility**

Bids Due: 3:00 PM
March 12, 2021
City Finance Officer
P.O. Box 176
Yankton, SD 57078

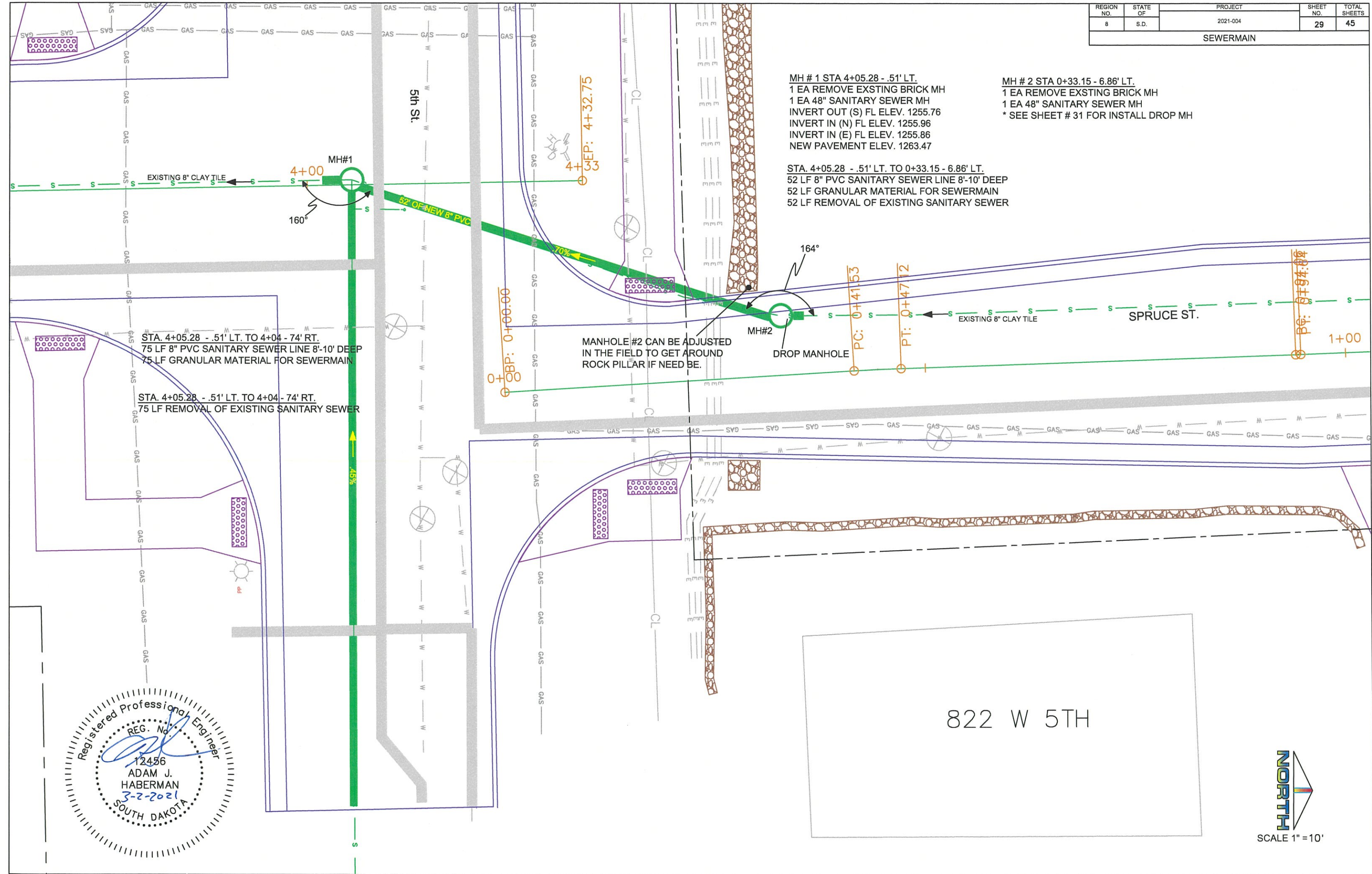
Contact Person: Bradley Moser
Civil Engineer
P.O. Box 176
Yankton, SD 57078
(605) 668-5255

The original plans and specifications are hereby amended by this Addendum. Bidders shall acknowledge receipt of this addendum by noting the addendum number and date on the space provided on the Bid Form. Bidders who distribute these specifications to subcontractors or suppliers are responsible for the distribution of the information contained herein to either the subcontractor or supplier.

Issued By *Bradley C Moser*
Bradley C. Moser, Civil Engineer

1. The attached page should be utilized in lieu of the original page 29, of the plan set. Under the note heading, “STA. 4+05.28 - .51’ LT. to 4+04 – 74’ RT”, the line for “2 EA – Sanitary Sewer 45° Bends”, has been removed. This change does not affect the bid proposal form. No other action is required.

REGION NO.	STATE OF	PROJECT	SHEET NO.	TOTAL SHEETS
8	S.D.	2021-004	29	45
SEWERMAIN				



MH # 1 STA 4+05.28 - .51' LT.
 1 EA REMOVE EXSTING BRICK MH
 1 EA 48" SANITARY SEWER MH
 INVERT OUT (S) FL ELEV. 1255.76
 INVERT IN (N) FL ELEV. 1255.96
 INVERT IN (E) FL ELEV. 1255.86
 NEW PAVEMENT ELEV. 1263.47

MH # 2 STA 0+33.15 - 6.86' LT.
 1 EA REMOVE EXSTING BRICK MH
 1 EA 48" SANITARY SEWER MH
 * SEE SHEET # 31 FOR INSTALL DROP MH

STA. 4+05.28 - .51' LT. TO 0+33.15 - 6.86' LT.
 52 LF 8" PVC SANITARY SEWER LINE 8'-10' DEEP
 52 LF GRANULAR MATERIAL FOR SEWERMAIN
 52 LF REMOVAL OF EXISTING SANITARY SEWER

STA. 4+05.28 - .51' LT. TO 4+04 - 74' RT.
 75 LF 8" PVC SANITARY SEWER LINE 8'-10' DEEP
 75 LF GRANULAR MATERIAL FOR SEWERMAIN

STA. 4+05.28 - .51' LT. TO 4+04 - 74' RT.
 75 LF REMOVAL OF EXISTING SANITARY SEWER

MANHOLE #2 CAN BE ADJUSTED
 IN THE FIELD TO GET AROUND
 ROCK PILLAR IF NEED BE.

822 W 5TH

