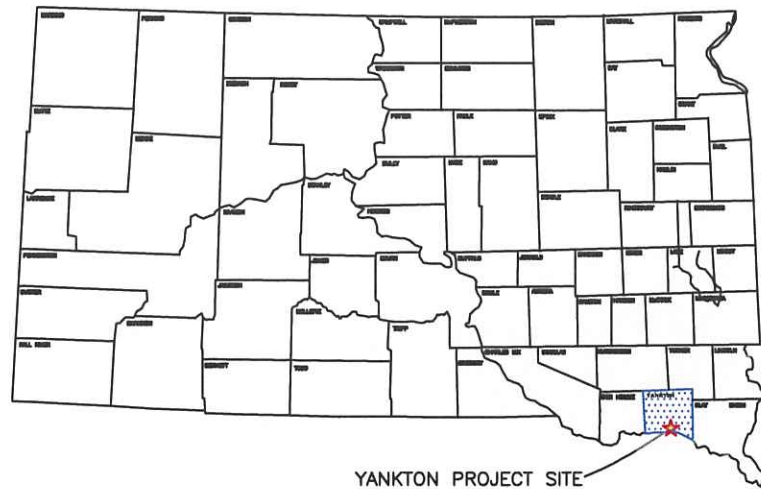


**2018  
SIDEWALK INSTALLATION  
HWY 81 FROM 23RD ST. TO 29TH ST.  
CITY OF YANKTON, SD  
CITY PROJECT NO. 2018-024**

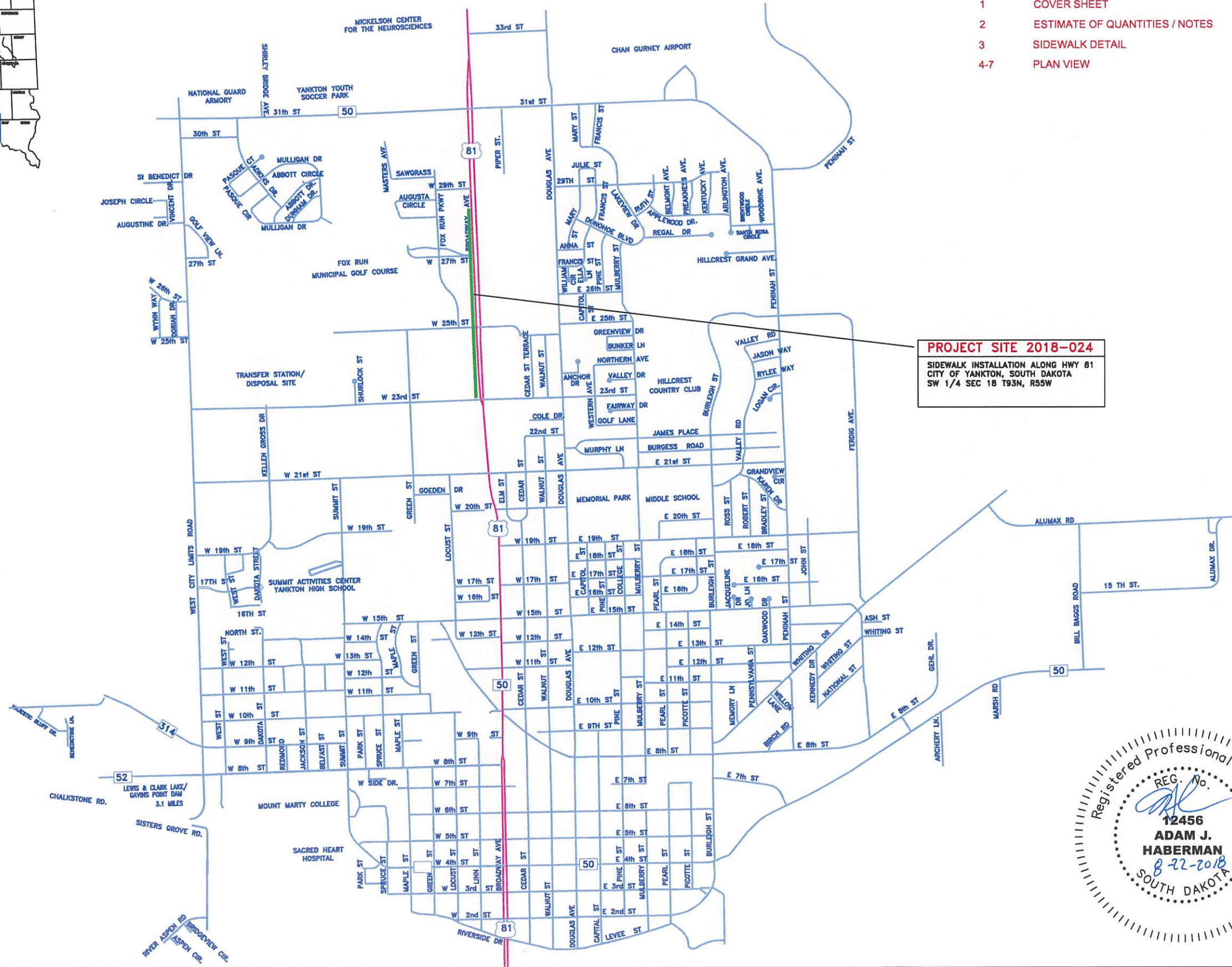
REGION NO.	STATE OF	PROJECT	SHEET NO.	TOTAL SHEETS
8	S.D.	2018-024	1	7
COVER SHEET				



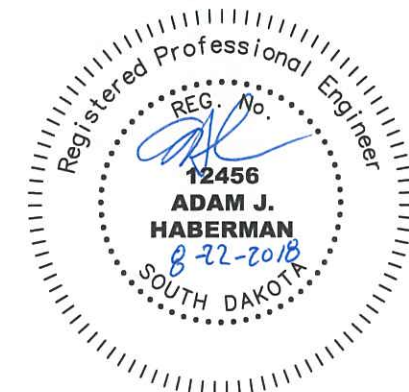
YANKTON PROJECT SITE

**SCHEDULE INDEX OF SHEETS**

- 1 COVER SHEET
- 2 ESTIMATE OF QUANTITIES / NOTES
- 3 SIDEWALK DETAIL
- 4-7 PLAN VIEW



**PROJECT SITE 2018-024**  
SIDEWALK INSTALLATION ALONG HWY 81  
CITY OF YANKTON, SOUTH DAKOTA  
SW 1/4 SEC 18 T93N, R55W



# ESTIMATE OF QUANTITIES

REGION NO.	STATE OF	PROJECT	SHEET NO.	TOTAL SHEETS
8	S.D.	2018-024	2	7
QUANTITIES / NOTES				

BID	ITEM #	ITEM	QUANTITY	UNIT
	1.	GRADING	1	LS
	2.	DETECTABLE WARNING PANELS	84	SF
	3.	4" CONCRETE SIDEWALK	10043	SF
	4.	SEEDING	1	LS
	5.	MOBILIZATION	1	LS
	6.	ASPHALT REMOVAL	78	SY
	7.	SAW EXISTING ASPHALT	70	LF

## WORK DESCRIPTION:

The City of Yankton is completing the sidewalk connections, on the west side of Broadway Ave. from 23rd St. to 29th St. Bids will be taken for the placement of sidewalk as depicted in the plans. Contractor will be required to grade the base material and place the concrete sidewalk. Backfill and seeding along the new sidewalk will be completed by the Contractor.

Contractor will need to furnish and install 7 - 6'x2' (12SF) detectable warning panels at locations designated in the plans. Price of panels will be separate from the sidewalk price.

The successful Contractor will be notified by September 28, 2018 and must complete the sidewalk installation by November 16, 2018.

Liquidated damages, in the amount of \$250, will be assessed for each working day after the completion date.

Any excess material is to be hauled to City of Yankton property located at 33rd and Douglas Ave.

## SURVEYING/STAKING:

All staking for sidewalk alignment will be completed by the City of Yankton. The sidewalk is to be installed as closely to the existing topography as possible, therefore grades and elevations sidewalk will be determined in the field.

## 4" CONCRETE SIDEWALK

Concrete sidewalk shall be constructed in accordance with Section 651 of Standard Specifications. Base course material, two(2) inches thick, shall be placed beneath the sidewalk.

## AGGREGATE BASE COURSE

Aggregate Base Course will be supplied by the City of Yankton. Material can be obtained at City stockpile site located at 23rd and Kellen Gross Dr. This material is to be weighed before leaving landfill. The Contractor is to supply his own personnel and equipment to load trucks. Landfill hours are from 8am to 3:45pm. This material to be used under all newly placed concrete /asphalt and to maintain access to intersecting streets and driveways as needed. Unit price shall constitute full compensation for personnel and equipment to load, haul, and place material. Aggregate Base Course shall be compacted to 95% of standard proctor density.

## CURING OF CONCRETE

Portland Cement Concrete Pavement, Concrete Curb & Gutter, Sidewalks, Valley Gutters, and Fillets shall be cured. All concrete shall be cured in accordance with section 380.3.P2 of the 2015 SDDOT Standard Specifications for Roads and Bridges except as modified in this note. All concrete shall be cured with a White Pigmented Linseed Oil Base Emulsion Compound when cured using the Impervious Membrane Method. Curing compound material shall be in accordance with section 821.1.D.

## UTILITIES:

No utilities were located for the purpose of design. Sidewalk locations may be adjusted if major conflicts with utilities arise. Make a free call to 811 (in-state) or (800) 781-7474 (outside of South Dakota).

## SEEDING

All grass areas disturbed by construction are to be hydromulched. Lump sum price will be for all areas disturbed by Contractor. Price shall also include the cost for fertilizer and fiber mulch, refer to SD-DOT Standard Specs 2004 Edition section 730 and 731. The following will be provided, by the Contractor, for use on the project unless an alternate is approved by the Engineer.

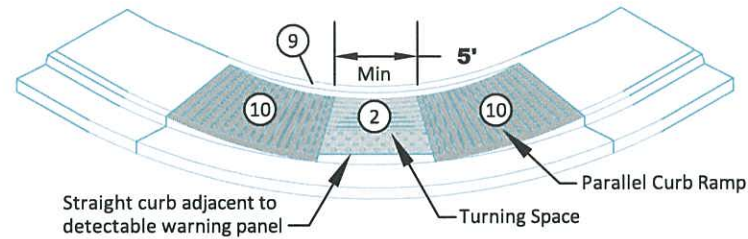
The estimated amount of area to be seeded: 6620 SF ( Estimated the disturbed area to be 10' with a 6' sidewalk)

<u>SEED MIXTURE</u>	<u>PURE LIVE SEED/ 1000 FT. SQ.</u>
Kentucky Bluegrass	1 pound
Perennial Rye Grass	1 pound
Park Kentucky Bluegrass	1 pound

## GRADING:

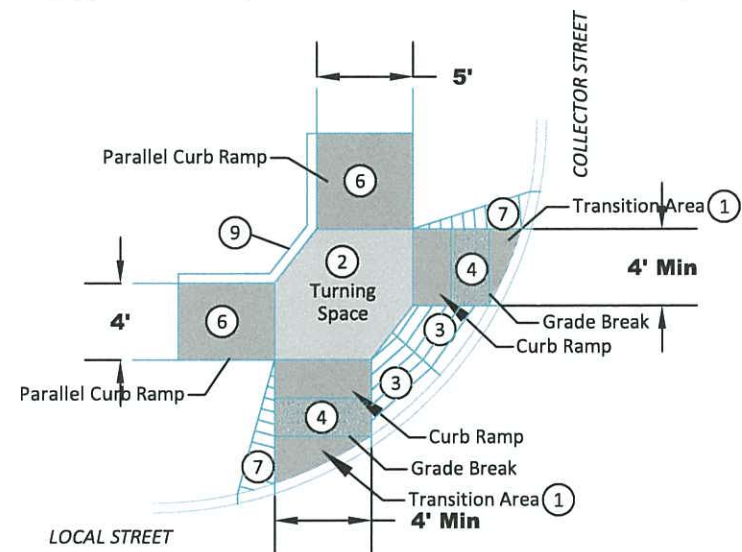
Work to include all excavation, and topsoil salvage. Also includes placing, spreading and fine grading the surface smooth for seeding application.

### PARALLEL CURB RAMP EXAMPLE

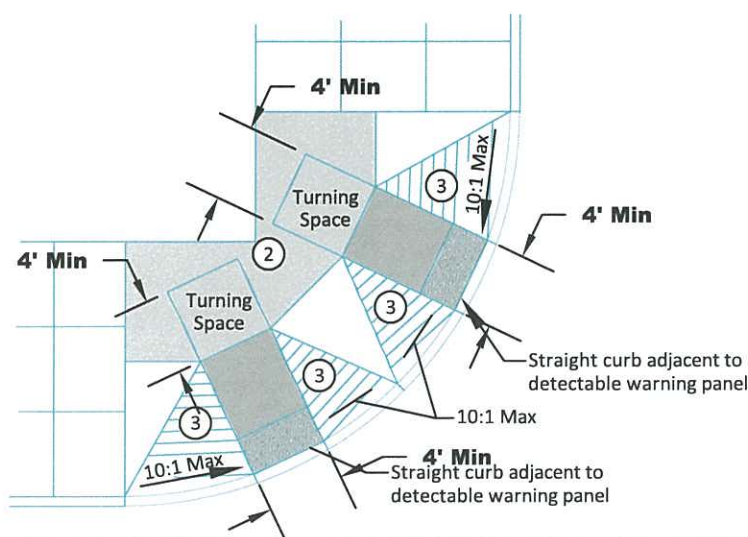


### DIRECTIONAL SIDEWALK RAMP EXAMPLE

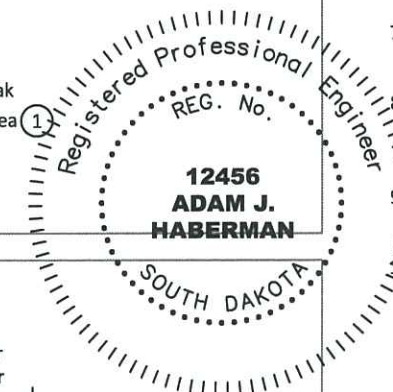
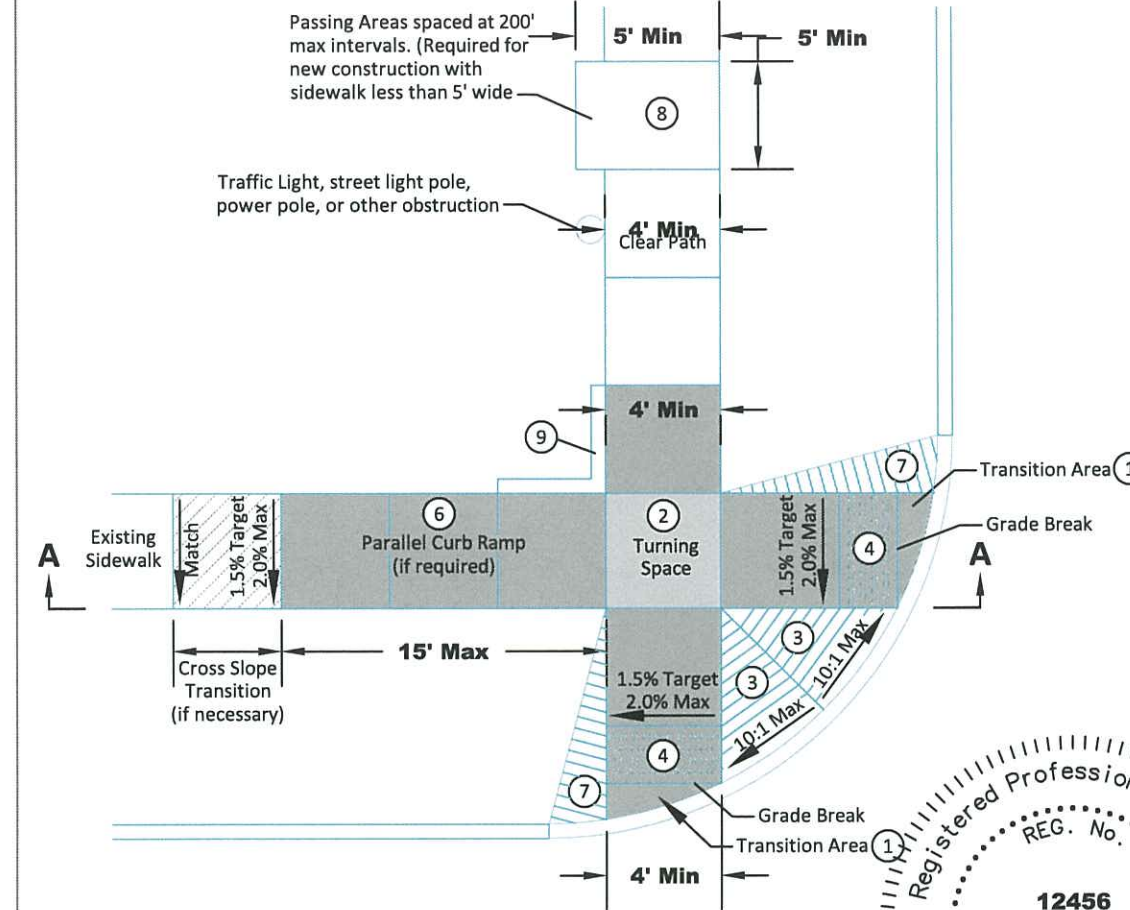
(Typical of a local/collector intersection with a 20' radius)



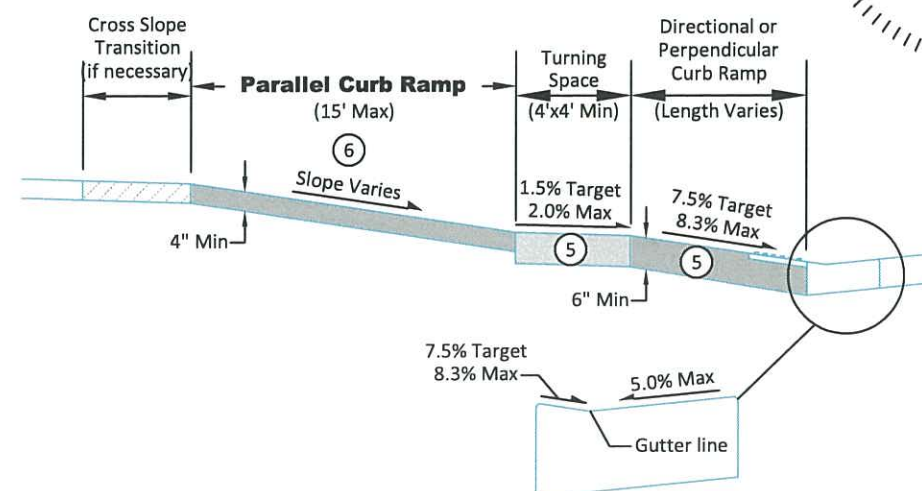
### PERPENDICULAR CURB RAMP EXAMPLE



### DIRECTIONAL SIDEWALK RAMP EXAMPLE



### SECTION A-A



### NOTES:

- Transition from the the 2% maximum cross slope on the ramp and the pedestrian street crossing grade in this area. The maximum cross slope on the pedestrian street crossing (including the fillet or curb and gutter) is 2% on stop or yield controlled legs and 5% on uncontrolled or signalized legs.
- Minimum 4 feet by 4 feet. Target cross slope of 1.5% with a maximum cross slope of 2.0% in any direction. Where the turning space is confined at the back of sidewalk (example: 6" curb or building), the turning space shall be 4 foot by 5 foot minimum. The 5 foot dimension shall be in the direction of the ramp run. The grade change between the turning space and the curb ramp must be perpendicular to the direction of travel.
- Areas where the pedestrian circulation path crosses a curb ramp are considered flare sides. The maximum slope of the flare sides is 10%. Full curb height may not be able to be reestablished on flare slopes but as much curb height as possible should be reestablished.
- Provide a minimum 2 foot width of detectable warning surfaces in the direction of pedestrian travel across the full width of the curb ramp or turning space, exclusive of curbs or flares. Orient domes in the direction of pedestrian travel unless otherwise stated in plans.
- The concrete in the turning space, curb ramp, and flare slope areas shall be a minimum thickness of 6 inches.
- If normal sidewalk elevation cannot be achieved with the perpendicular ramp between the street and turning space due to limited ramp length, provide a parallel ramp to make up the elevation difference between the turning space and the standard sidewalk. This parallel ramp shall not exceed 8.3% slope. However, the length of the ramp is not required to exceed 15 feet, regardless of slope. The minimum sidewalk thickness for the parallel ramp in this area is 4 inches.
- Install a 2 foot taper when additional sidewalk will not be located adjacent to the curb ramp.
- To accommodate the passing area requirement, sidewalks must be a minimum of 5 foot wide through the driveway approach. See plate 651.01 for additional information.
- Depending on the conditions, a curb up to 6 inches high may need to be installed on the back of the turning space or adjoining sidewalk.
- The slope of curb ramp and adjacent curb is designed at 7.5% or less but shall not be steeper than 8.3% unless otherwise specified in the plans. The curb ramp is not required to exceed 15 feet, regardless of slope. The cross slope target is 1.5% with a maximum cross slope of 2.0%.

### GENERAL NOTES:

The turning space, curb ramp, and detectable warning panel area will be paid for at the contact unit price for the corresponding concrete sidewalk bid item.

The detectable warning panel shall be measured and paid for to the nearest square foot. Payment shall include all costs for materials, labor, and equipment necessary for the installation of the detectable warning panels.  
Revised: December 2016



CITY OF SIOUX FALLS  
ENGINEERING DIVISION  
ACCESSIBLE CURB RAMPS

SPECIFICATION  
REFERENCE  
NO. 650

PLATE  
NUMBER  
651.02

SIDEWALK TO BE INSTALLED  
WILL BE STAKED BY CITY.

23RD STREET

BROADWAY

1595 SF

1316 SF

826 SF



SCALE 1" = 60'

REGION NO 8  
STATE OF  
PROJECT  
2018-024  
SHEET NO 5  
PLAN LAYOUT



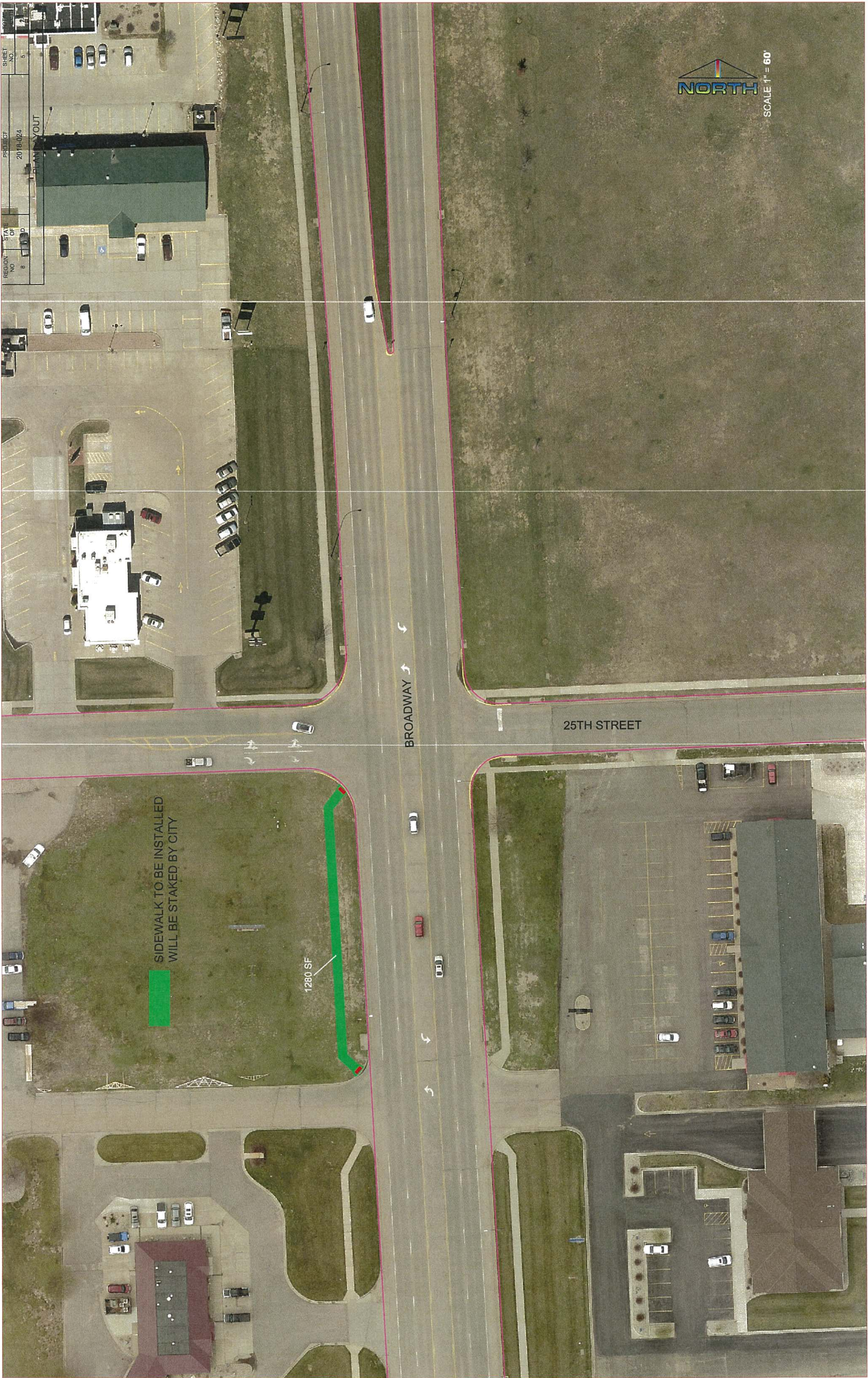
SCALE 1" = 60'

SIDEWALK TO BE INSTALLED  
WILL BE STAKED BY CITY

1280 SF

BROADWAY

25TH STREET



REGION NO.	STATE OF	PROJECT	SHEET NO.	TOTAL SHEETS
8	S.D.	2018-024	6	7
PLAN LAYOUT				

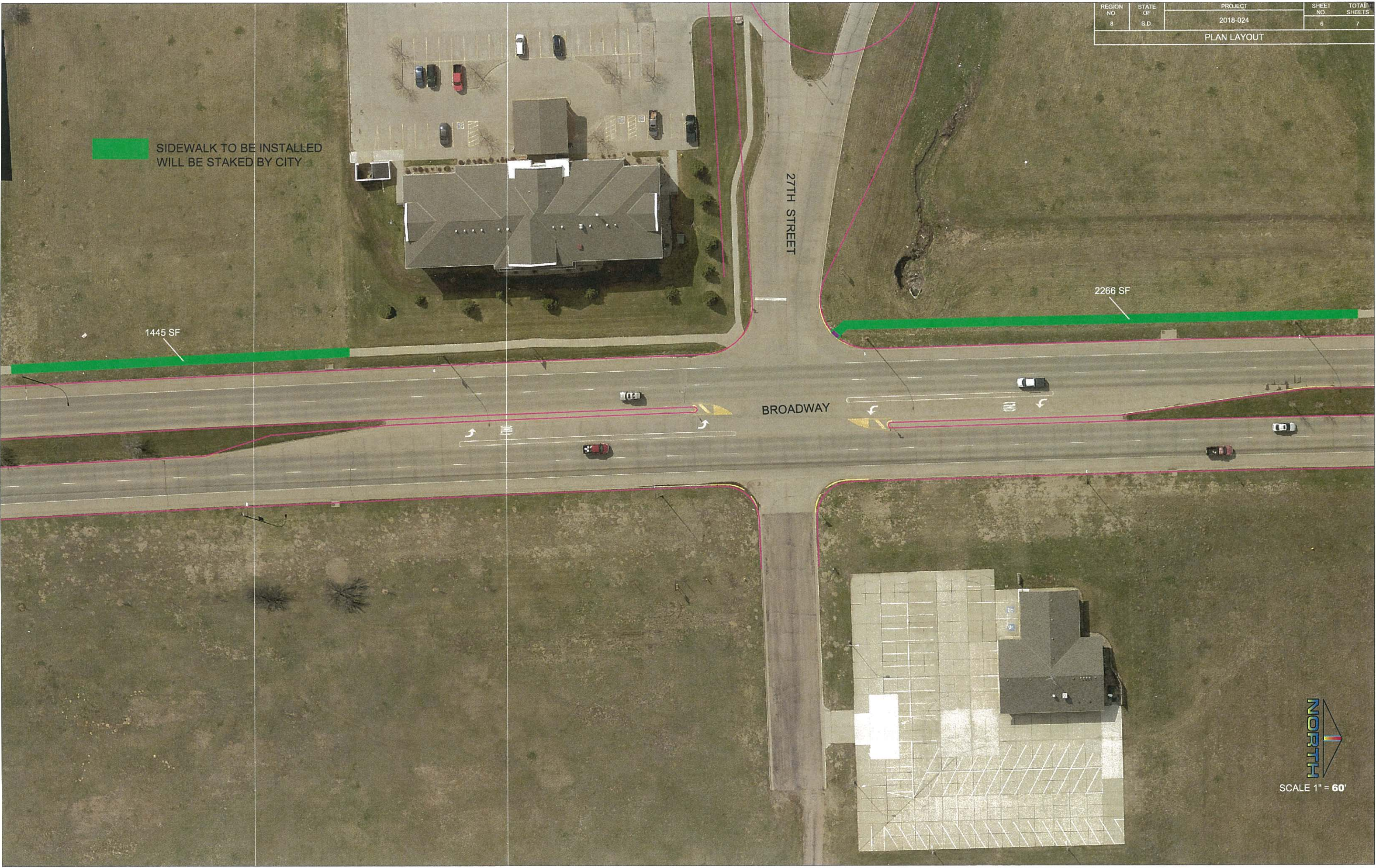
SIDEWALK TO BE INSTALLED  
WILL BE STAKED BY CITY

1445 SF

2266 SF

27TH STREET

BROADWAY



REGION	STATE	PROJECT	SHEET	TOTAL
NO.	OF		TAG	SHEETS
8	S.D.	2024 B-024	7	7

PLAN LAYOUT

SIDEWALK TO BE INSTALLED  
WILL BE STAKED BY CITY

1315 SF  
ASPHALT REMOVAL  
THRU DRIVEWAY

29TH STREET

BROADWAY



SCALE 1" = 60'

